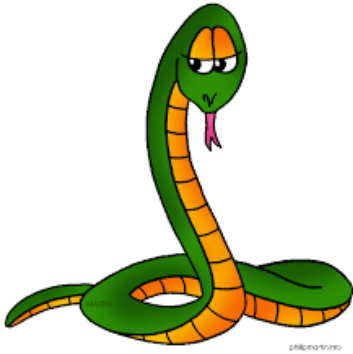


GLOBAL SUPPORT TEAM

Mamba

SAM09



A mamba is a big indigenous South African snake. There are green mambas and black mambas. Both are poisonous.

One person is chosen as the mamba.

An playing area is marked out (we usually make it 10 x 10 metres for 20 children).

Everyone must stay within the marked off area. The object is to stay away from the mamba.

At a signal the game begins.

The snake tries to catch the players. When a player is caught that player joins the snake by placing his/her hands on the snakes shoulders or around the waist.

Each new "catch" becomes another part of the snake's body, always adding to the snake's tail. (As the snake eats, it becomes bigger and bigger.

If a player leaves the designated area the player must sit down on the boundary and misses out the rest of the game.

Only the "head" of the snake can catch new people. The snake can use its "body" to capture other players, as players may not pass between the snake's body parts.

Game ends when all but one of the players have been caught. The last person caught becomes the next mamba!

Suitable for

BEAVERS
cubs
SCOUTS

